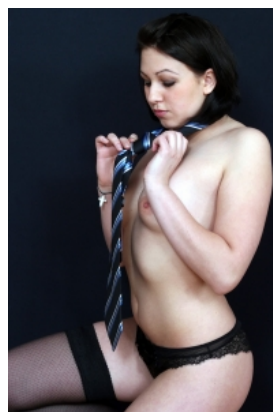
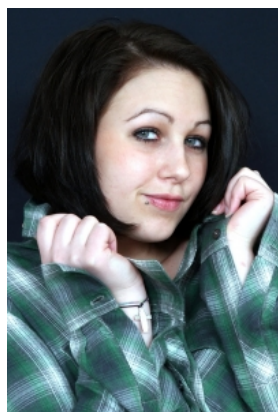
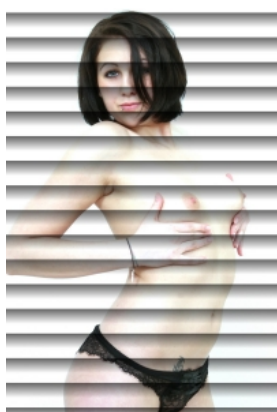
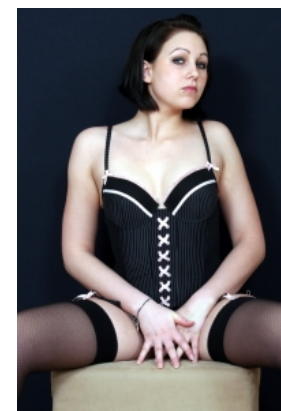
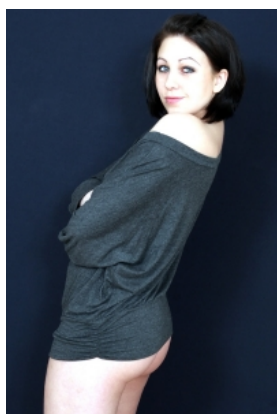




das hochglanz.ch-model emi r.



## details

jahrgang: 1989

grösse: 164 cm

konfektion: 34 / 36

wohnregion:

gewicht: 54 kg

schuhe: 38

masse: 0 / 0 / 0

ostschweiz

## einsatzbereiche

mode: ja

kunst: ja

portrait: ja

werbung: ja

bademode: ja

dessous: ja

teilakt: ja

akt: ja